

This floor plan shows the second level of a home. It includes a Primary Bedroom (16'2" x 18'9") with a fireplace and closet, a Living Room (20'2" x 25'7"), a Dining Area (10'4" x 11'), a Kitchen (10'4" x 14'4") with a double wall oven and skylight, a Pantry, a Sitting Area (10'7" x 9'2"), a Foyer, and a Front Porch. The bathroom area contains a Primary Bath, a full Bath, and two linen closets. There are three bedrooms: Bedroom 2 (13'7" x 12'7") and Bedroom 3 (12'7" x 12'7"). Storage areas include a Storeroom and a Deck. Closets include wardrobes in the bedrooms, a linen closet, and a closet in the foyer.

The floor plan for the second floor includes the following details:

- DECK**: Located at the top and left of the plan.
- UP**: Multiple staircases labeled 'UP' are shown, including one at the top left, one in the center left, and one in the center.
- BEDROOM 4**: 12'10" x 11'7". Includes a closet (**CL**).
- BATH**: Includes a toilet, sink, and shower.
- FAMILY ROOM**: 17'1" x 19'5". Includes a fireplace, a wet bar, and a home hydrant.
- MECH**: Mechanical room.
- LAUN.**: Laundry room with a door (**D**) and window (**W**).
- WIC**: Walk-in closet.
- BEDROOM 5**: 12'5" x 12'11".

2-CAR GARAGE

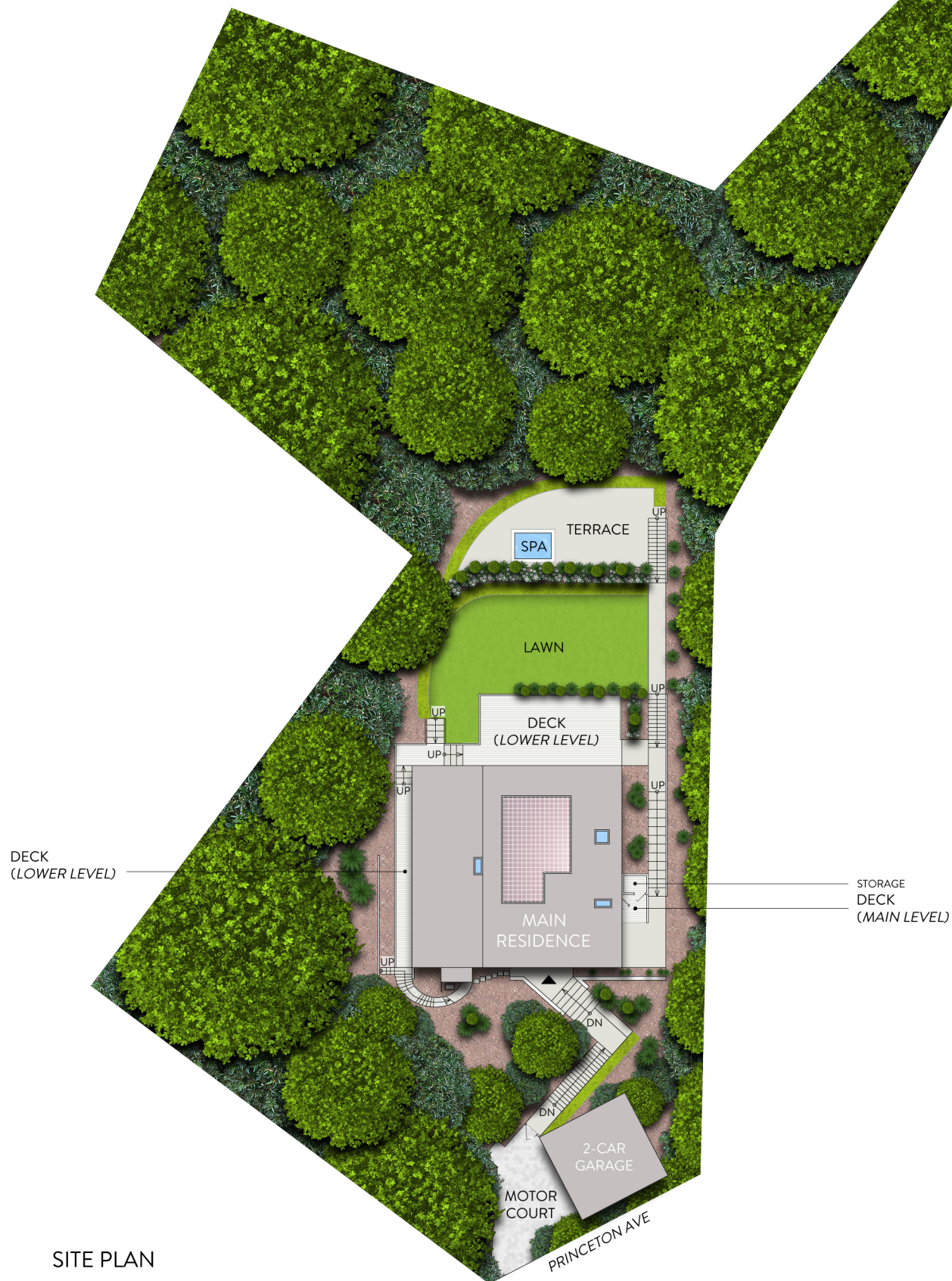
D

W

LAUN.

231 Princeton Avenue, Mill Valley

5 Bedrooms | 3 Bathrooms | 3,385 Sq. Ft. | 2 Car Parking



SITE PLAN

